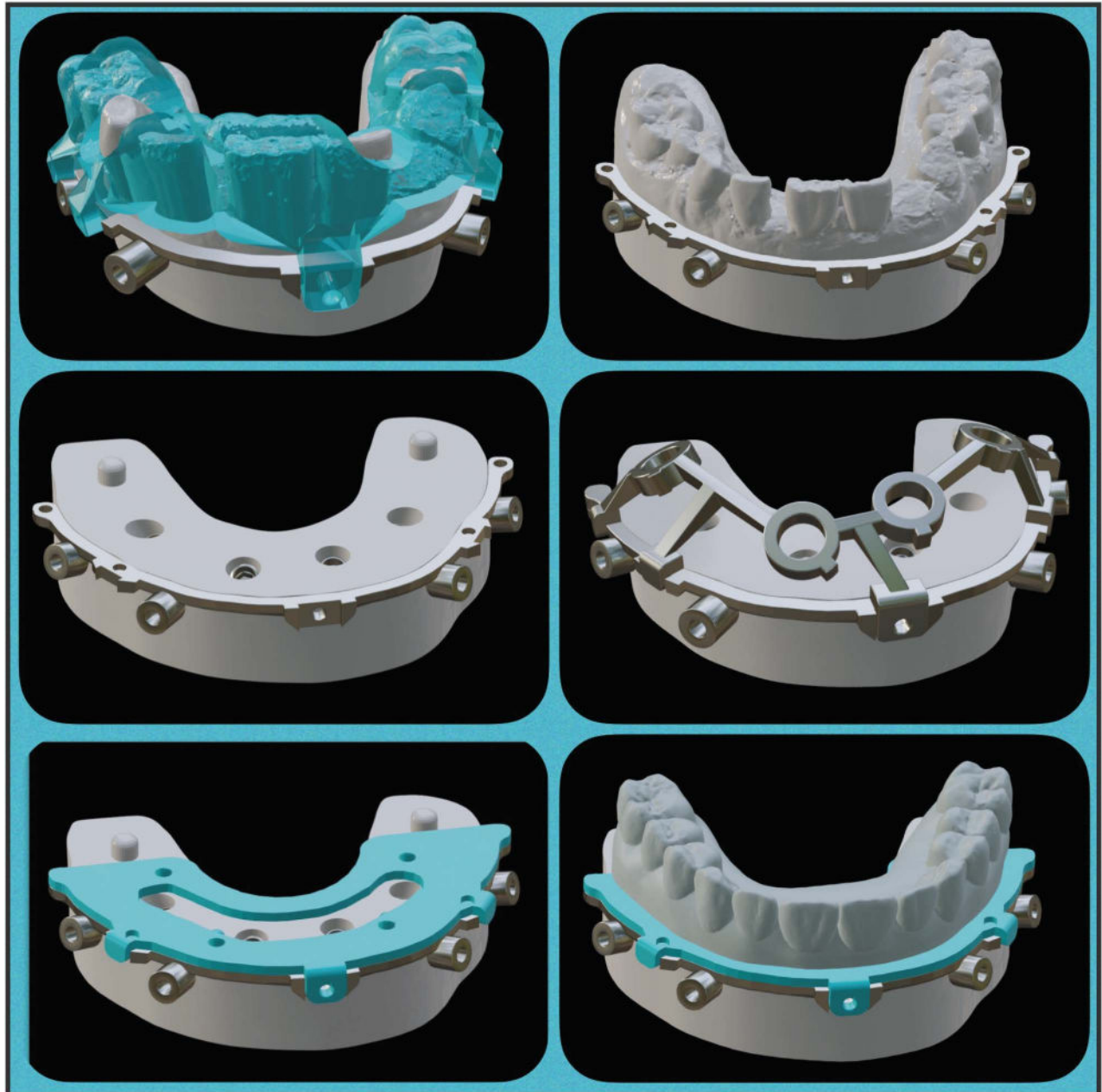


EZ SURGICAL GUIDE® Reference Manual



EZ SURGICAL GUIDE



- 1 Positioning Guide
- 2 Metal EZ Baseplate
- 3 Osteotomy EZ SURGICAL GUIDE
- 4 Prosthetic Delivery Guide
- 5 Nano-Ceramic Temporary
- 6 Bone Reduction Model
- 7 Bone Reduction Base Model
- 8 Lower Model
- 9 Upper Model

10 Locking Pin



11 Drill Fixation Kit



12 Stellar Pick Up Kit



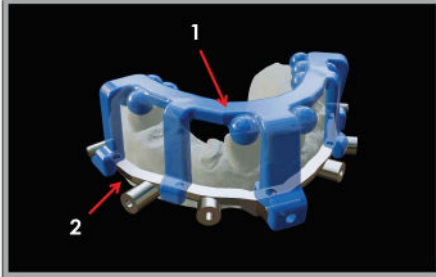
Items will be referenced by their corresponding number on the following pages.

Perfect Arch Surgical Packet contains:

- Surgical Report
- Hinge Guide System
- Stellar Pick Up Kit
- Drill fixation Kit
- Optional Back Up Denture

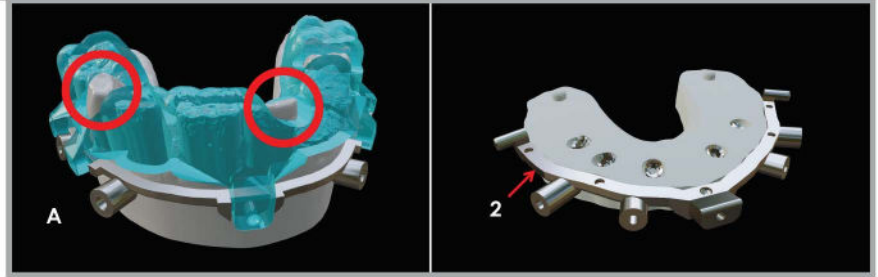
EZ SURGICAL GUIDE

Positioning Guide



The Positioning Guide is used to index from existing teeth (dentate patient) or tissue (edentulous patients) to set the vertical on the Hinge Metal Baseplate (2). If the positioning system is incorrect, additional occlusal adjustments to the Positioning Guide (1) may be needed.

Positioning Guide And EZ Baseplate



Accurate seating of the Positioning Guide is paramount for achieving optimal results and minimizing adjustments. Once the Positioning Guide is secured to the teeth or tissue, it will function as a vertical positioner for the Hinge Baseplate which will become the base for all the other surgical and prosthetic guides. To correctly secure the Positioning Guide prior to drilling with the fixation pins and drill for dentate patients make sure the incisal edges are securely touching the guide with no gap (A).

3D Printed Working Model



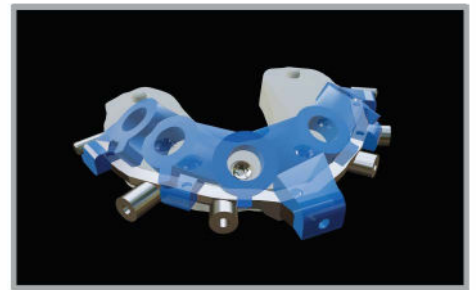
The implant analogs are in the pre-planned position. The Bone Reduction Model and the replica of the existing dentition have posts that will guide the seating of these components onto the Working Model for evaluation.

3D Printed Opposing Model



Both of the 3D printed models have a base with will allow for easy installation onto an articulator.

Surgical Guide

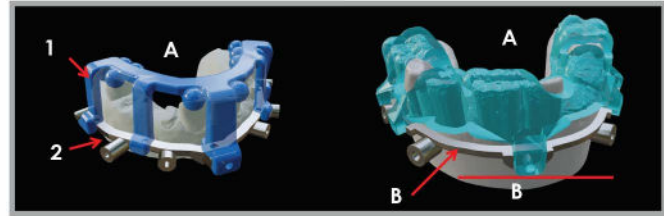


The Osteotomy Guide is secured in place onto the Metal Hinge Frame (2). Implant Hex timing is indicated by the notch on the master cylinder (A).

EZ SURGICAL GUIDE

1. Try-In STAGE **A**

Attach the Positioning Guide(1) to the Metal Hinge Baseplate(2) with the Locking Pin(10) verify fitment over the teeth or tissue



i. Mark the level of buccal tissue retraction, remove the Positioning Guide and retract the buccal tissue to the appropriate level. If there is any amount of discrepancy in fitment, the doctor should call the Lab for guidance.

ii. If the Positioning Guide is not correctly installed it will have an impact on the accuracy of the implant positions and prosthetic occlusal accuracy.

2. Reflect Tissue Beyond the Metal EZ Baseplate (2)

B

3. Seat the Positioning Guide (1)

B

The system should seat the same way in the mouth as it did on the provided model (C)

PLEASE NOTE: If the components don't seat completely over the Base Plate (2)

1. Tissue is not reflected enough (refer to the working model) **C**
2. Tissue is trapped between the components and the Base Plate
3. Not enough bone reduction

Tips for Seating the Bone Foundation Guide **B**

FIG. 1



Place Positioning Guide over the teeth or tissue and secure with the Locking Pin (10)

FIG. 2



Drill and pin one site at a time placing each pin after immediately drilling from left to right (A,B,C,D)

FIG. 3



Remove the Locking Pin (10) and the Positioning Guide

EZ SURGICAL GUIDE

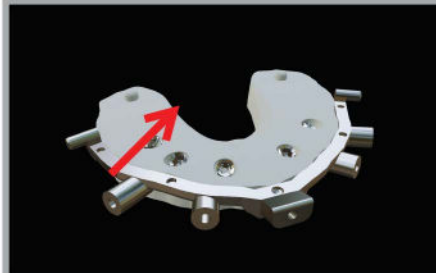
Surgery Day

FIG. 4



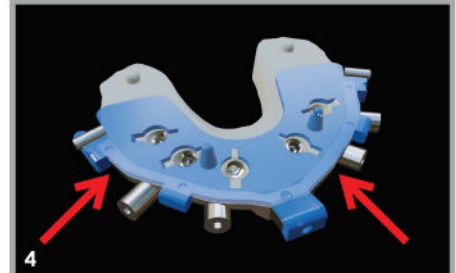
Extract the teeth and perform an even plane bone reduction along the Base Plate (2)

FIG. 5



Check the reduction by visualizing the even plane

FIG. 6



Check the bone reduction by installing the Prosthetic Delivery Guide (4) and verifying a passive fit

FIG. 7



Install the Osteotomy Hinge Guide (3) and secure with Locking Pin (10) to the Base Plate (2)

FIG. 8

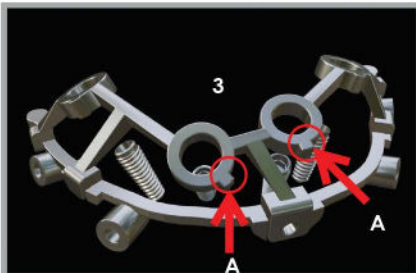


Once the Hinge Guide (3) is secured make your osteotomies according to the implant manufacturers recommendations

FIG. 9



FIG. 10



Place Implants through the guide Hex Timing (A) is marked by the notch on the master cylinder for proper implant position

FIG. 11



Remove the Osteotomy Guide (3) and place the Prosthetic Delivery Guide (4) securing it with the Locking Pin (10) onto the Base Plate (2)

FIG. 12



EZ SURGICAL GUIDE

4. Verify Passive Fit and Place Multiunit Abutments

FIG. 1



FIG. 2

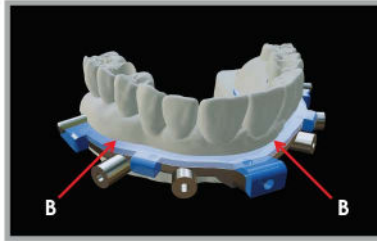
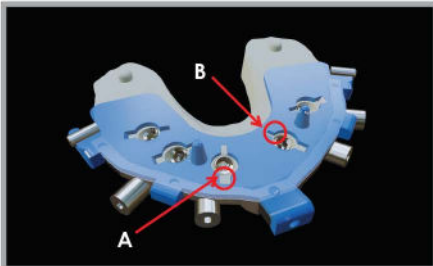


FIG. 3



Verify passive fit of their prosthetic delivery guide (4) by placing the teeth onto the prongs (A). There should be no rocking or gaps in between (B)

FIG. 4



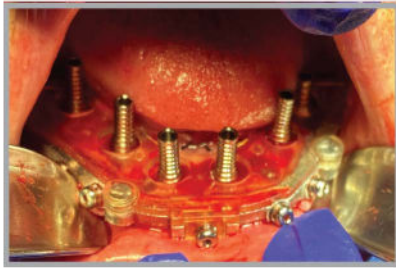
Hex timing for the angled Multi Unit Abutment (A) place lingual set screw in the notch and tighten. Hex timing for the implant is noted as position (B)



Multi Unit Abutment (C)
Lingual Set Screw (D)

5. Stellar Prosthetic Pickup 12

FIG. 1



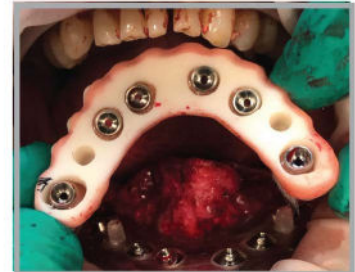
Screw the Temporary Cylinders onto the Multi Unit Abutments

FIG. 2



Use provided pick up material to bond the cylinders

FIG. 3



Unscrew the prosthetic and back fill any voids and trim cylinders if needed

TIP

Sometimes the prosthetic holes may have to be adjusted on the provisional and the prosthetic delivery guide

EZ SURGICAL GUIDE

7. Adjust The Occlusion

FIG. 1



Balance out the occlusion

Day Of Surgery

Make sure the patient is biting evenly

Follow Up Appointment

Make final occlusal adjustments a few days after surgery

NOTE: Dont over adjust the occlusion, patient bite may change in the follow up appointment

8. Fill in the screw access holes with light body impression material

Other Guided Systems Available

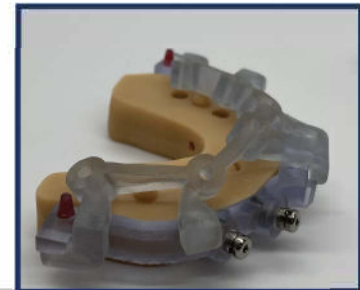
Free Hand Assist EZ SURGICAL GUIDE

FIG. 1



This Free Hand Approach Offers Guided Bone Reduction (FIG. 1) With Optional 2mm Pilot Drill Guide (FIG. 2)

FIG. 2



Free Hand Assist EZ SURGICAL GUIDE

FIG. 3



We Offer Custom Digital Full Arch Solutions . Let Us Design a System For You

FIG. 4



Free Hand Assist System

Horse Shoe Guide For Placing Implants